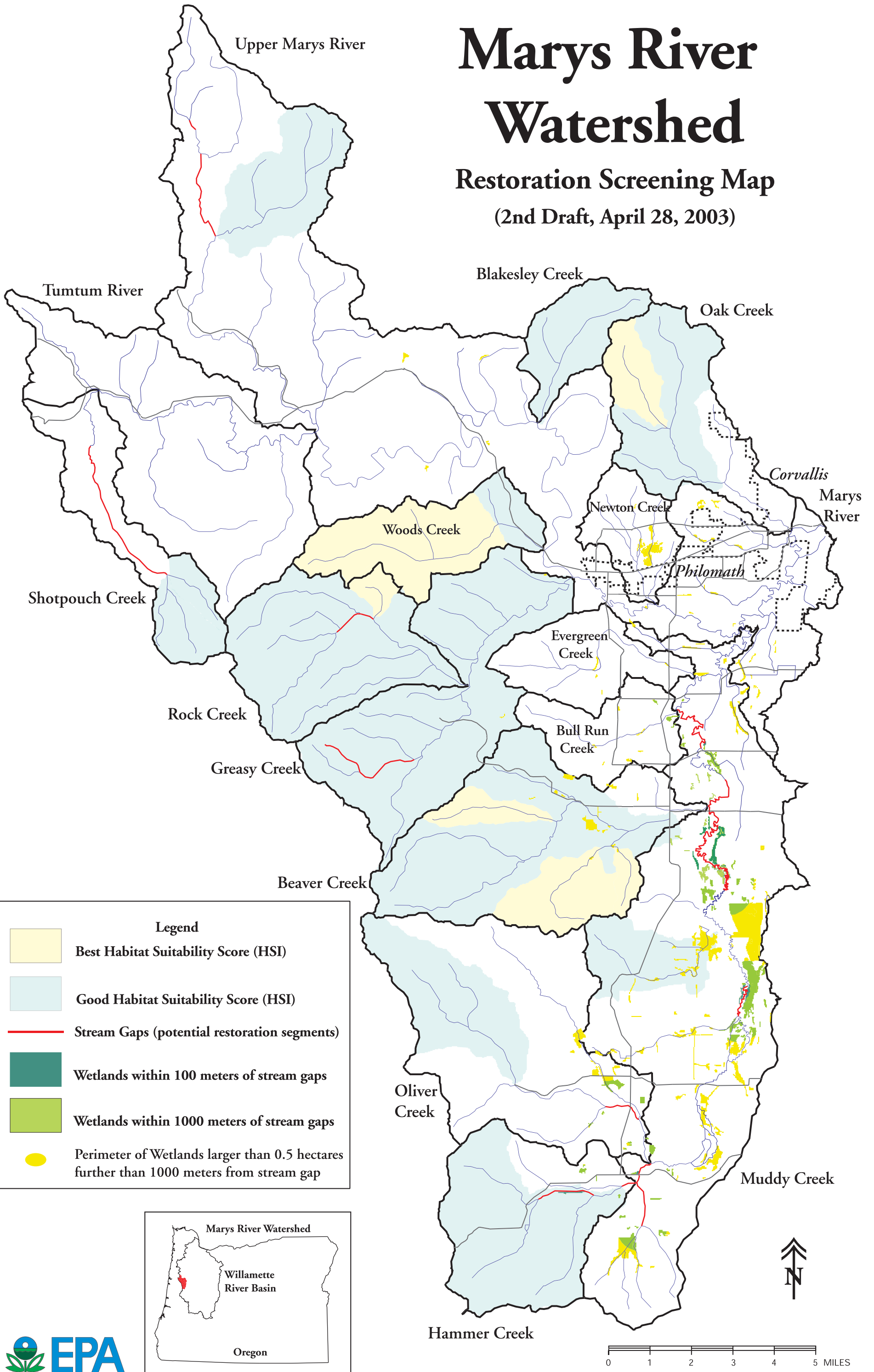


Marys River Watershed

Restoration Screening Map

(2nd Draft, April 28, 2003)



Legend

- Best Habitat Suitability Score (HSI)
- Good Habitat Suitability Score (HSI)
- Stream Gaps (potential restoration segments)
- Wetlands within 100 meters of stream gaps
- Wetlands within 1000 meters of stream gaps
- Perimeter of Wetlands larger than 0.5 hectares further than 1000 meters from stream gap

